

## Tenement Application Lodged in Western Australia

### Highlights

- Significant application lodged for a new tenement (E63/2213) adjacent to Company's existing tenements at the Eyre Project, WA
- Granting of the tenement (87.1km<sup>2</sup>) would substantially bolster current landholding at the Project to 667.1km<sup>2</sup>
- Exploration program targeting lithium and base metals underway at the Eyre Project

Larvotto Resources Limited (**ASX:LRV**, **TGAT:K6X**, 'Larvotto' or 'the Company') is that the Company has applied for an exploration licence adjoining its Eyre Project in Western Australia (E63/2213). The new tenement is located approximately 600km east of Perth and 200km south of Kalgoorlie and covers 87.1km<sup>2</sup>.

The tenement will add to the Company's current landholding at the Eyre Project, increasing to a total of approximately 667km<sup>2</sup>. The ground was applied for on the basis of an airborne magnetic geophysical survey that has indicated the presence of interesting rock units within the tenement which is immediately east of the company's Merivale lithium prospect and south of Liontown Resources Limited's (ASX : LTR) Buldania lithium project.

Larvotto will commence an auger soil geochemical sampling program at the Eyre Project as soon as Native Title approvals are received. An initial geochemical soils program will immediately test two initial areas, prospective for lithium and base metals, where historical exploration has identified broad anomalous zones.

### **Managing Director, Ron Heeks commented,**

"This application for a new tenement is significant for the future of our Eyre Project, which is located in close proximity to several active mines in the region. We look forward to receiving first results from the geochemical sampling planned to commence in mid-April."

"The Eyre Project is emerging as a multi-commodity prospect for Larvotto. Not only has it historically demonstrated potential as a gold and base metal project, but we are also excited about the lithium opportunity that exists at the site."

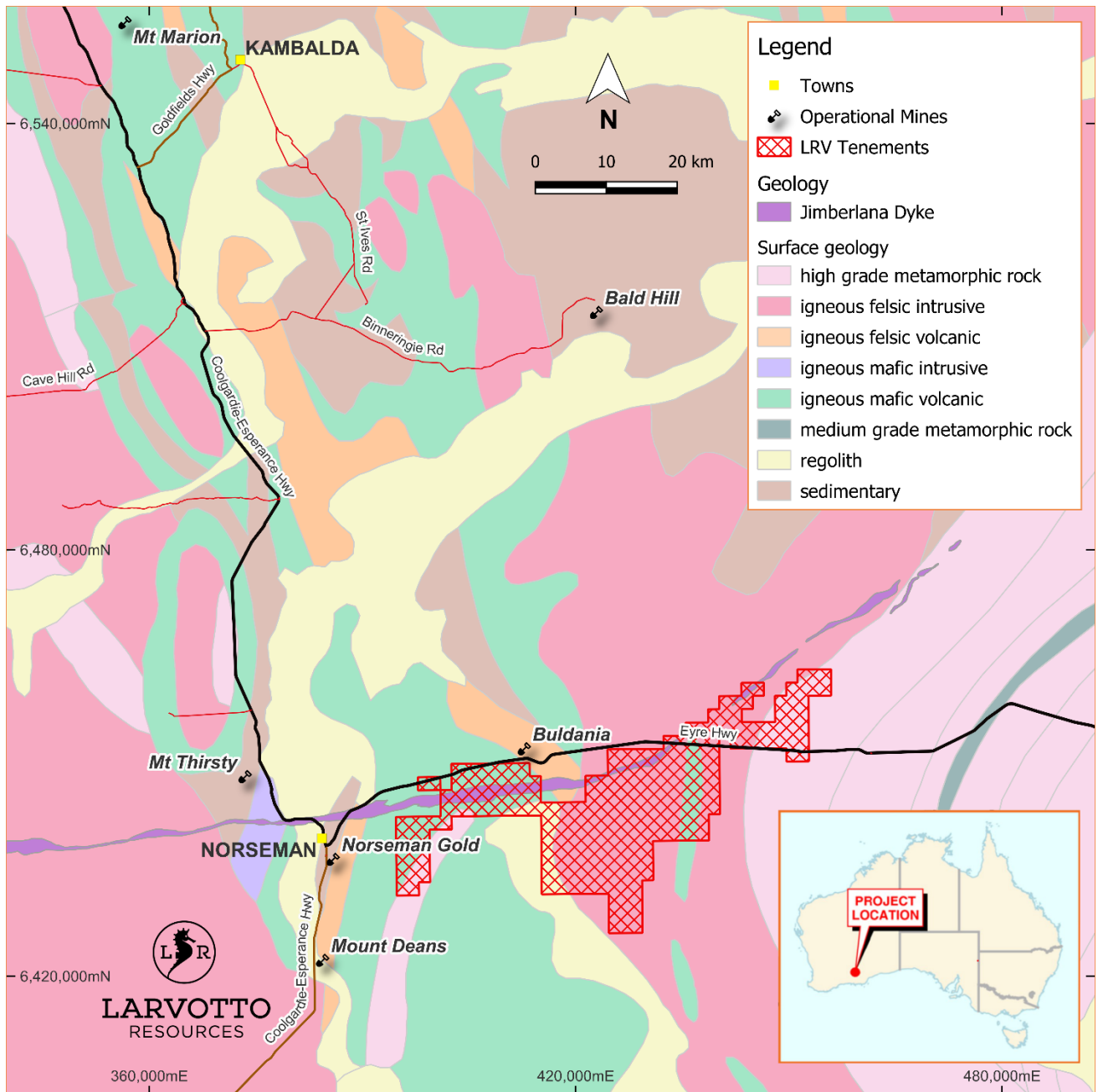
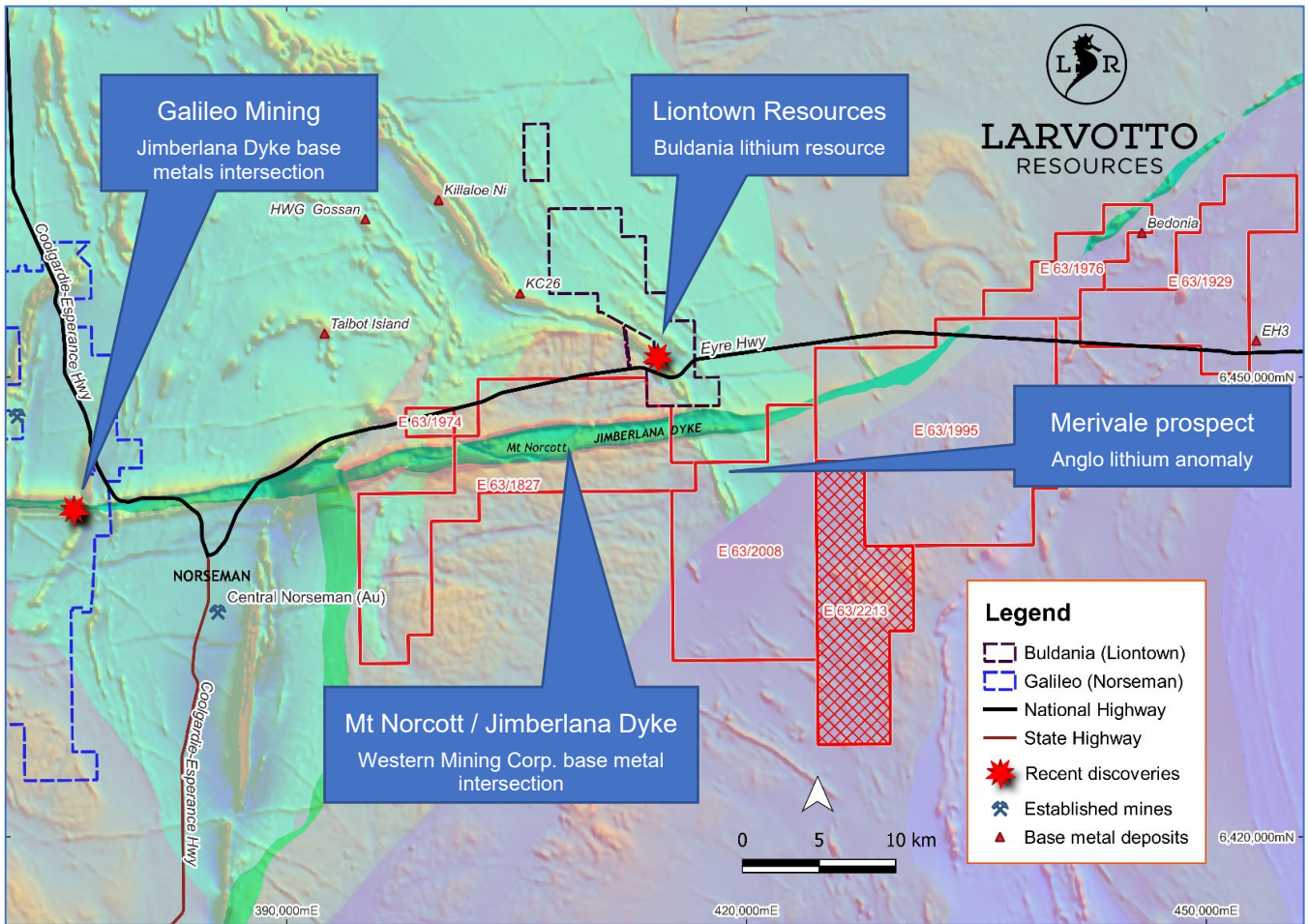


Figure 1. Eyre Project location map



**Figure 2.** Eyre Project tenement map with new tenement detailed in red hatching.

This announcement was authorised for release by the Board of Larvotto Resources Limited.

## About Larvotto Resources Ltd

Larvotto Resources Limited (ASX:LRV) is actively exploring its portfolio of projects including the large Mt Isa copper, gold, and cobalt project adjacent to Mt Isa townsite in Queensland, an exciting gold exploration project at Ohakuri in New Zealand's North Island and the Eyre multi-metals and lithium project located some 30km east of Norseman in Western Australia. Larvotto's board is a mix of experienced explorers and corporate financiers. Visit [www.larvottoresources.com](http://www.larvottoresources.com) for further information.

## JORC Reporting of Historic Exploration Results

Full location data on the historical drill holes as well as details of any previous exploration activities and results, and JORC Tables 1 and 2 (Sampling Techniques and Data and Reporting of Exploration Results) according to the JORC Code 2012 Edition were included at Annexure A of the Company's Prospectus dated 18 October 2021. The Company confirms that it is not aware of any new information or data that materially affects the information included within the Prospectus dated 18 October 2021.

## Forward Looking Statements

Any forward-looking information contained in this news release is made as of the date of this news release. Except as required under applicable securities legislation, Larvotto does not intend, and does not assume any obligation, to update this forward-looking information. Any forward-looking information contained in this news release is based on numerous assumptions and is subject to all of the risks and uncertainties inherent in the Company's business, including risks inherent in resource exploration and development. As a result, actual results may vary materially from those described in the forward-looking information. Readers are cautioned not to place undue reliance on forward looking information due to the inherent uncertainty thereof.



### LARVOTTO RESOURCES LIMITED

ABN 16 645 596 238

ASX:LRV | TGAT:K6X

136 Stirling Highway,  
Nedlands, WA 6009

PO Box 496, Claremont, WA 6910

+61 (8) 6373 0112

[info@larvottoresources.com](mailto:info@larvottoresources.com)

[www.larvottoresources.com](http://www.larvottoresources.com)

### DIRECTORS

**Mr Mark Tomlinson**

Non-Executive Chairman

**Mr Ron Heeks**

Managing Director

**Ms Anna Nahajski-Staples**

Non-Executive Director

**Ms Suzanne Irwin**

Company Secretary

### PROJECTS

**Mt Isa Au, Cu, Co**

Mt Isa, QLD

**Ohakuri Au**

New Zealand

**Eyre Ni, Au, PGE, Li**

Norseman, WA

### FOLLOW US



### CONTACT

For further information, please contact:

**Mr Ron Heeks**

Managing Director

+61 (8) 6373 0112

[info@larvottoresources.com](mailto:info@larvottoresources.com)

**Victoria Humphries**

Media and investor enquiries

[victoria@nwrcommunications.com.au](mailto:victoria@nwrcommunications.com.au)